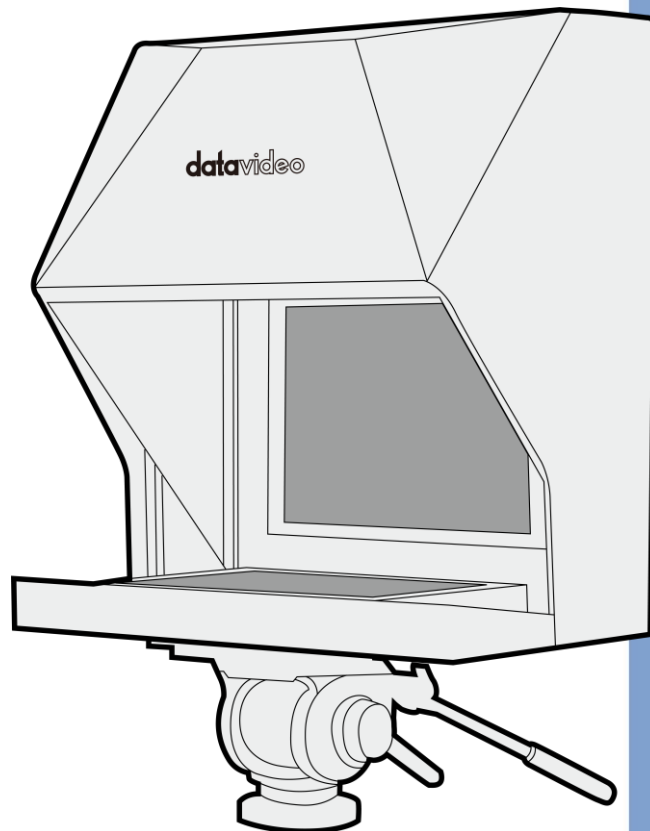


datavideo



PTZ
TELEPROMPTER KIT
TP-900

Instruction Manual

www.datavideo.com

Contents

FCC COMPLIANCE STATEMENT	4
WARNINGS AND PRECAUTIONS	4
GLASS – HANDLE WITH CARE.....	4
WARRANTY.....	5
STANDARD WARRANTY	5
REGISTER FOR 3 YEAR WARRANTY	5
DISPOSAL	5
PACKING LIST	6
QUICK START GUIDE.....	8
PRODUCT OVERVIEW	15
FEATURES.....	15
ASSEMBLY – TP-900	16
CONNECT A PC/LAPTOP FOR CONTROL AND MONITORING OVER IP	20
DIRECT ETHERNET CONNECTION	20
CONNECTION VIA A ROUTER / DHCP LAN	20
CAMERA EXPOSURE AND THE 70/30 MIRROR GLASS	21
CLEANING THE 70/30 GLASS.....	21
OPTIONAL TELEPROMPTER REMOTE CONTROLS.....	22
WR-500 HANDHELD CONTROLLER	22
<i>Control Buttons</i>	22
<i>Remote Accessories</i>	23
FS-30 FOOT SWITCH.....	24
<i>Control Buttons</i>	24
GENERIC PRESENTATION CLICKERS	24
<i>Control Buttons</i>	25
CONTOUR SHUTTLE XPRESS	25
<i>Setup</i>	25
<i>Control Buttons</i>	28
DVPROMPTER PLUS APP	29
DOCUMENTS SCREEN.....	29
CREATING AND EDITING TEXT SCRIPTS AND SLIDES	29
<i>Text Scripts</i>	29
<i>Slides</i>	30
REAL TIME EDITING	33
PLAYLISTS.....	33
<i>Adding a Script to the Playlist</i>	33
<i>Adding HDMI IN to the Playlist</i>	34
<i>Changing the Playlist Order</i>	34

CONTROL	34
<i>Via the Device (USB Mouse)</i>	34
<i>Via the Web Interface</i>	34
<i>Using Optional Hardware Remote Controls</i>	35
MENU BAR.....	36
<i>Settings</i>	36
SYNCHRONIZING MULTIPLE DEVICES.....	38
<i>Via HDMI</i>	38
<i>Via Ethernet</i>	38
USING THE HDMI INPUT	39
HARDWARE MIRRORING	39
CONNECTING AN EXTERNAL DISPLAY.....	40
UPDATING THE APP & FIRMWARE.....	41
<i>Updating the Monitor Firmware</i>	41
<i>Updating the App</i>	41
SPECIFICATIONS	43
SERVICE AND SUPPORT	44

Disclaimer of Product and Services

The information offered in this instruction manual is intended as a guide only. At all times, Datavideo Technologies will try to give correct, complete and suitable information. However, Datavideo Technologies cannot exclude that some information in this manual, from time to time, may not be correct or may be incomplete. This manual may contain typing errors, omissions or incorrect information. Datavideo Technologies always recommend that you double check the information in this document for accuracy before making any purchase decision or using the product. Datavideo Technologies is not responsible for any omissions or errors, or for any subsequent loss or damage caused by using the information contained within this manual. Further advice on the content of this manual or on the product can be obtained by contacting your local Datavideo Office or dealer.

FCC Compliance Statement

This device complies with part 15 of the FCC rules. Operation is subject to the following two conditions:

1. This device may not cause harmful interference, and
2. This device must accept any interference received, including interference that may cause undesired operation.

Warnings and Precautions



1. Read all of these warnings and save them for later reference.
2. Follow all warnings and instructions marked on this unit.
3. Unplug this unit from the wall outlet before cleaning. Do not use liquid or aerosol cleaners. Use a damp cloth for cleaning.
4. Do not use this unit in or near water.
5. Do not place this unit on an unstable cart, stand, or table. The unit may fall, causing serious damage.
6. Slots and openings on the cabinet top, back, and bottom are provided for ventilation. To ensure safe and reliable operation of this unit, and to protect it from overheating, do not block or cover these openings. Do not place this unit on a bed, sofa, rug, or similar surface, as the ventilation openings on the bottom of the cabinet will be blocked. This unit should never be placed near or over a heat register or radiator. This unit should not be placed in a built-in installation unless proper ventilation is provided.
7. This product should only be operated from the type of power source indicated on the marking label of the AC adapter. If you are not sure of the type of power available, consult your Datavideo dealer or your local power company.
8. Do not allow anything to rest on the power cord. Do not locate this unit where the power cord will be walked on, rolled over, or otherwise stressed.
9. If an extension cord must be used with this unit, make sure that the total of the ampere ratings on the products plugged into the extension cord do not exceed the extension cord rating.
10. Make sure that the total amperes of all the units that are plugged into a single wall outlet do not exceed 15 amperes.
11. Never push objects of any kind into this unit through the cabinet ventilation slots, as they may touch dangerous voltage points or short out parts that could result in risk of fire or electric shock. Never spill liquid of any kind onto or into this unit.
12. Except as specifically explained elsewhere in this manual, do not attempt to service this product yourself. Opening or removing covers that are marked "Do Not Remove" may expose you to dangerous voltage points or other risks, and will void your warranty. Refer all service issues to qualified service personnel.
13. Unplug this product from the wall outlet and refer to qualified service personnel under the following conditions:
 - a. When the power cord is damaged or frayed;
 - b. When liquid has spilled into the unit;
 - c. When the product has been exposed to rain or water;
 - d. When the product does not operate normally under normal operating conditions. Adjust only those controls that are covered by the operating instructions in this manual; improper adjustment of other controls may result in damage to the unit and may often require extensive work by a qualified technician to restore the unit to normal operation;
 - e. When the product has been dropped or the cabinet has been damaged;
 - f. When the product exhibits a distinct change in performance, indicating a need for service.

GLASS – Handle with Care



This product contains a sheet of 70/30 mirror glass please handle it with care.

To avoid a risk of damage or injury please follow this instruction manual and use caution when transporting, un-packing, cleaning, assembling or dis-assembling this part of the product.

Warranty



Standard Warranty

- Datavideo equipment are guaranteed against any manufacturing defects for one year from the date of purchase.
- The original purchase invoice or other documentary evidence should be supplied at the time of any request for repair under warranty.
- The product warranty period begins on the purchase date. If the purchase date is unknown, the product warranty period begins on the thirtieth day after shipment from a Datavideo office.
- All non-Datavideo manufactured products (product without Datavideo logo) have only one year warranty from the date of purchase.
- Damage caused by accident, misuse, unauthorized repairs, sand, grit or water is not covered under warranty.
- Viruses and malware infections on the computer systems are not covered under warranty.
- Any errors that are caused by unauthorized third-party software installations, which are not required by

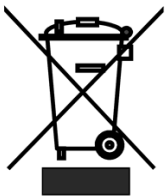
our computer systems, are not covered under warranty.

- All mail or transportation costs including insurance are at the expense of the owner.
- All other claims of any nature are not covered.
- All accessories including headphones, cables, and batteries are not covered under warranty.
- Warranty only valid in the country or region of purchase.
- Your statutory rights are not affected.

Register for 3 Year Warranty

- All Datavideo products purchased after July 1st, 2017 are qualified for a free two years extension to the standard warranty, providing the product is registered with Datavideo within 30 days of purchase.
- Certain parts with limited lifetime expectancy such as LCD panels, DVD drives, Hard Drive, Solid State Drive, SD Card, USB Thumb Drive, Lighting, Camera module, PCIe Card are covered for 1 year.
- The three-year warranty must be registered on Datavideo's official website or with your local Datavideo office or one of its authorized distributors within 30 days of purchase.

Disposal



For EU Customers only - WEEE Marking

This symbol on the product or on its packaging indicates that this product must not be disposed of with your other household waste. Instead, it is your responsibility to dispose of your waste equipment by handing it over to a designated collection point for the recycling of waste electrical and electronic equipment. The separate collection and recycling of your waste equipment at the time of disposal will help to conserve natural resources and ensure that it is recycled in a manner that protects human health and the environment. For more information about where you can drop off your waste equipment for recycling,

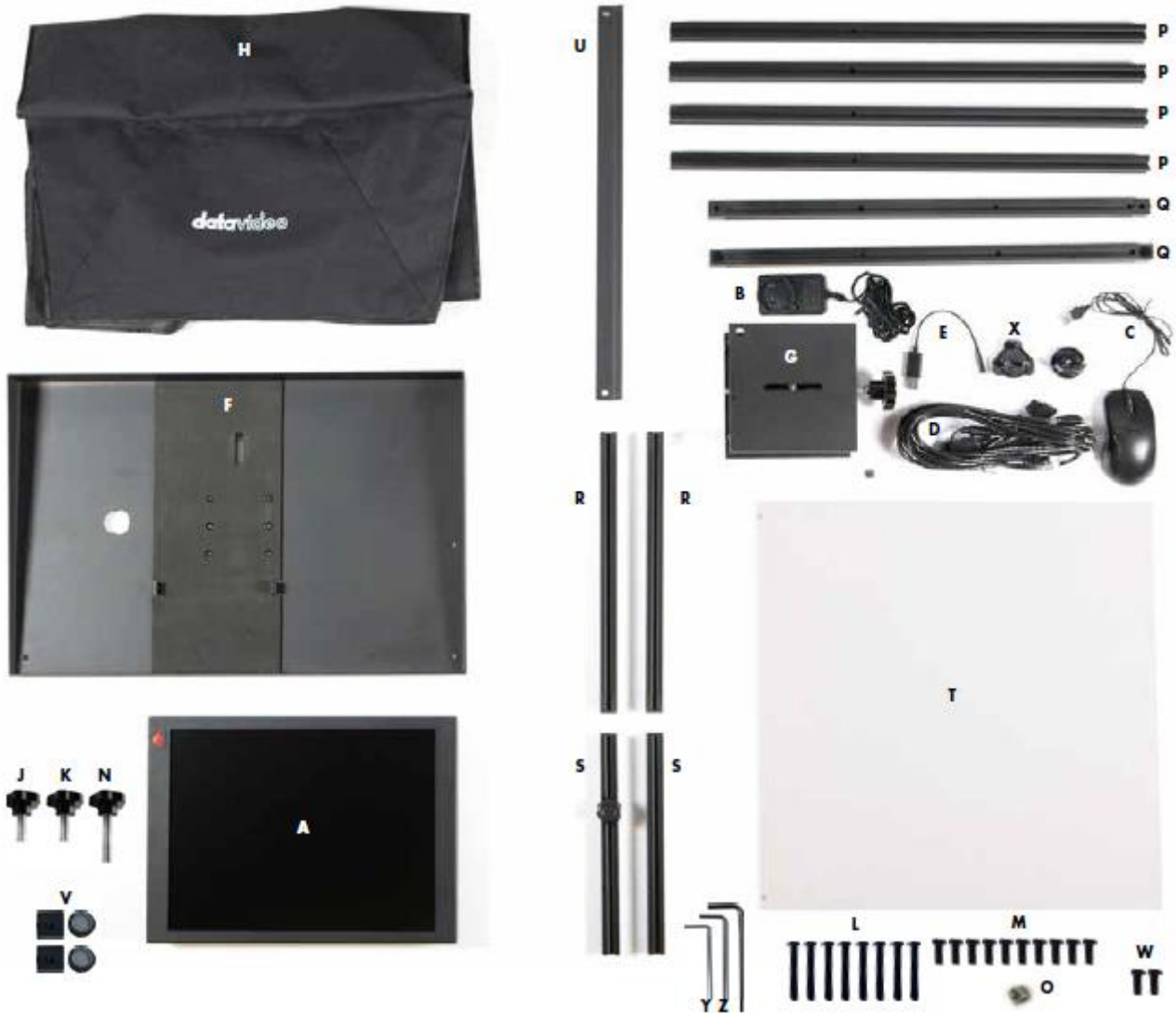
please contact your local city office, your household waste disposal service or the shop where you purchased the product.



CE Marking is the symbol as shown on the left of this page. The letters "CE" are the abbreviation of French phrase "Conformité Européene" which literally means "European Conformity". The term initially used was "EC Mark" and it was officially replaced by "CE Marking" in the Directive 93/68/EEC in 1993. "CE Marking" is now used in all EU official documents.

Packing List

Item	Description	Quantity
A	15" LCD Control Unit	1
B	12V universal Mains PSU	1
C	USB Mouse	1
D	5m Ethernet Cable Note: An optional 12V PoE adapter is available, contact your Datavideo sales representative for more information.	1
E	3.5mm input adapter for WR-500 remote control	1
F	TP-900 metal base tray with tripod plate	1
G	150 x 150 PTZ Scissor Lift	1
H	Cloth Hood	1
I	M4 CRV hex tool	1
J	9mm long ¼ thumb screw with red dot	1
K	9mm long ¼ thumb screw with washers	1
L	M6*40mm screws	8
M	M6*14mm screws	10
N	16mm long screw	1
O	3/8 to ¼ adapter	1
P	565mm Vertical extrusions	4
Q	475mm horizontal extrusions with 90 degree joining blocks	2
R	325mm glass support extrusions with single end caps	2
S	250mm PTZ lift extrusions with both end caps	2
T	70/30 mirror glass	1
U	Glass support bar	1
V	Spare black extrusion end caps	2
W	Spare M6*14mm screws	2
X	12V regulated DTap cable	1
Y	Small CRV hex tool to remove the tripod plate from item F	1
Z	Medium CRV hex tool to remove 90 degree joining blocks from item Q	1



NOTE: Depending on your order, your TP-900 kit could have been supplied with one of a range of remote controls – for more information on the remote controls please speak with your local Datavideo supplier or check our website www.datavideo.info for details.

Quick Start Guide



1. Grab TP-900 metal base tray (Item F) and lay flat on surface such as a table.

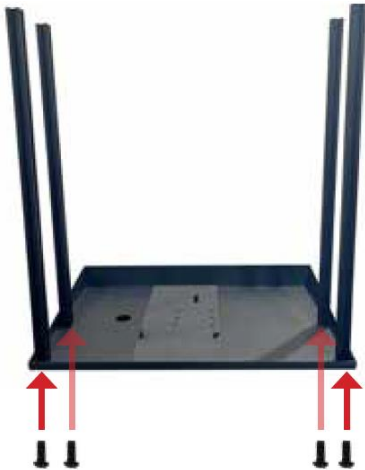


TTTT

2. Grab 4 x 565mm vertical extrusions (Item P) and 4 x M6 14mm screws (Item M).



Note: Make sure screw opening closest to the end is facing away from metal base tray (Item F).



3. Attach the four 565mm vertical extrusions (Item P) to metal base tray (Item F) using the M6 14mm screws (Item M).

Use M4 CRV hex tool (Item I) for this.



TTTT

4. Grab two 475mm horizontal extrusions (Item Q) & four M6 x 14mm screws (Item M). Remove circular cover caps and place aside.



Use M4 CRV hex tool (Item I)



5. Replace the black circular plastic caps



6. Grab two 325mm glass support extrusions with single end caps (Item R) and four M6 x 40mm screws (Item L).



7. Use M4 CRV hex tool (Item I) to attach screws to the vertical extrusions.



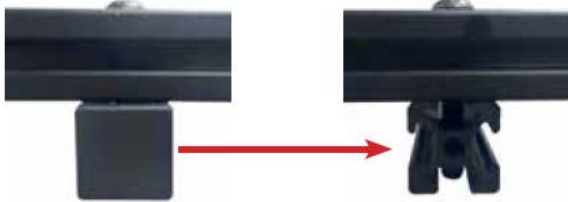
8. Grab two 325mm glass support extrusions (Item R) and four M6 x 14mm screws (Item M).



9. Use M4 CRV hex tool (Item I) to attach screws to the vertical extrusions.



10. Top view should look like this.



11. Remove squared black plastic end caps from extrusions 1 & 2.



12. Remove squared black plastic caps from extrusions 1 & 2 for PTZ.



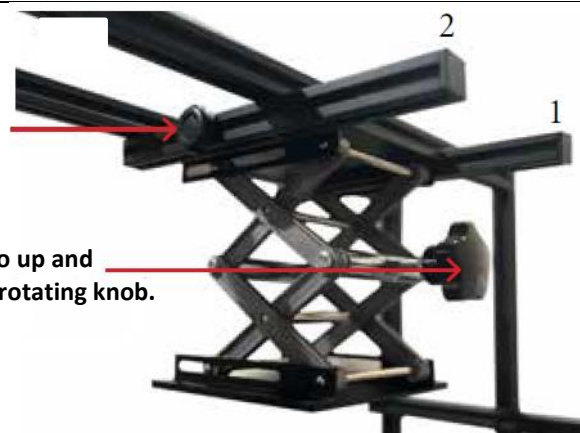
13. Insert the 150 x 150 PTZ scissor lift (Item G) in between the extrusions (1 & 2) as shown above.



14. Ensure that adjustment knob is facing the rear of the teleprompter as shown.

15. Lock the position of the 150 x 150 PTZ Scissor Lift (Item G) with the 16mm long screw (Item N).

Note: If item N does not lock, try loosening M6 x 14mm screws on extrusion 2 and add the 16mm long screw (Item N) back on then proceed to reattach the screws.



16. Can go up and down by rotating knob.



17. With the PTZ Scissor Lift locked, now lay on flat table. Attach/screw quick release plate of your tripod to the bottom of the TP-900 metal base plate (Item F).

18. Once installed, mount onto your tripod.

Note: Tripod must be able to uphold over 25 lbs (tripod not included).



19. Grab glass support bar (Item U) and two M6 x 14mm screws (Item M).



20. Use M4 CRV hex tool (Item I) to attach screws to the vertical extrusions.



21. Leave about a quarter or an inch of space between glass support bar (Item U) and glass support extrusion (Item R).



22. Grab 70/30 mirror glass (Item T). Carefully remove plastic covering.



23. Place mirror glass carefully in the center.



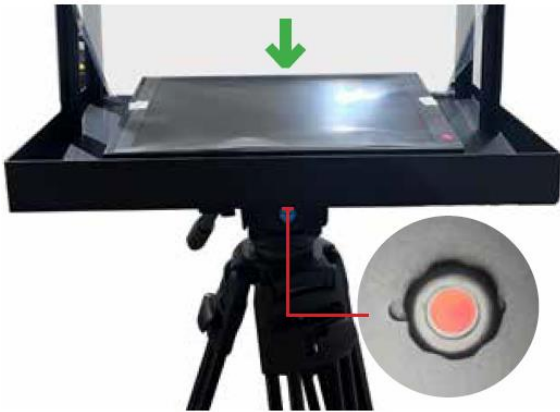
Note: You will see a red dot and a green dot on the mirror glass. The green dot should face the talent.



24. Fasten the space between glass support bar (Item U) and glass support extrusion (Item R) with the M4 CRV hex tool (Item I).



25. Grab the 15" LCD control unit monitor (Item A).



26. Install the 15" LCD control unit (Item A) by inserting the 9mm long 1/4 thumb screw with red dot (Item J) through the slot in the TP-900 metal base tray with tripod plate (Item F).



27. Now bring the PTZ scissor lift down (Item G).



28. Install your PTZ camera (camera not included) upside down onto the PTZ scissor lift (Item G).



29. Install your PTZ camera onto PTZ scissor lift (Item G) with thumb screw (Item K).



30. Adjust the position of the 150 x 150 PTZ Scissor Lift (Item G) as required.

Tip: Position the PTZ lens as close to the 70/30 mirror glass as possible to achieve the best pan range.

Continue onto Next Page





Product Overview

The TP-900 teleprompter is designed specifically for PTZ cameras. Mounting the PTZ upside down removes the operational limitations of a PTZ camera within a prompter, the PTZ has greater movement in the shots it can achieve.

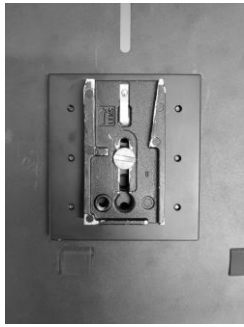
TP-900 features a bright 15" LCD screen with dvPrompter Plus app built-in. There is no need to run software on a laptop.

Prepared scripts or cue sheets can be easily copied and pasted into the dvPrompter Plus app software and scrolled at a set automatic rate or controlled by a user with the optional wired / wireless remote for a more natural result. A number of clear fonts, colours and text sizes are available making reading comfortable from a variety of distances.

Features

- Adjustable PTZ lift, supports all PTZ cameras on the market
- dvPrompter Plus software built in
- HDMI input and HDMI output can be used to connect multiple TP-900s together, synchronisation over Ethernet is also possible.
- The HDMI output can also be used to drive external displays
- Fully controllable via Ethernet
- An optional 12V PoE adapter is available
- An optional wired remote control and foot pedal is available
- Can also be controlled using standard wireless presentation remotes and the Contour Shuttle Xpress

Assembly – TP-900



1. Attach/screw the tripod's own quick release plate to the screw holes on the base of the TP-900 metal base tray with tripod plate, **Item F**. Use the 3/8 to 1/4 adapter, **Item O** if required.



2. Now slide and secure the tripod plate, with TP-900 metal base tray with tripod plate, **Item F**, onto the head of the tripod or dolly.



3. Attach the four 565mm Vertical extrusions, **Item P** using the M6*14mm screws, **Item M** and M4 CRV hex tool, **Item I**.



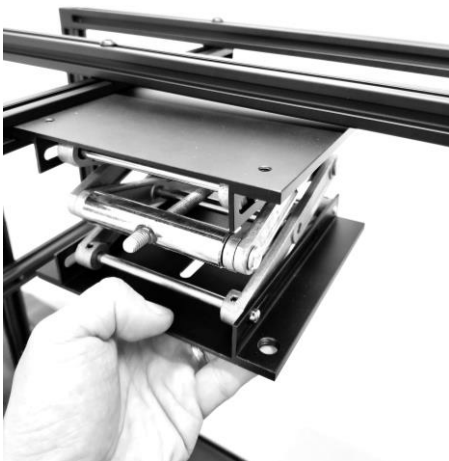
4. Attach the two 325mm glass support extrusions with single end caps, **Item R** to the four 565mm Vertical extrusions, **Item P** using the M6*40mm screws, **Item L** and M4 CRV hex tool, **Item I**.



5. Attach the two 475mm horizontal extrusions with 90 degree joining blocks, **Item Q** using the M6*14mm screws, **Item M** and M4 CRV hex tool, **Item I** and replace the black circular plastic caps.



6. Attach one of the 250mm PTZ lift extrusions with both end caps, **Item S** using the M6*40mm screws, **Item L** and M4 CRV hex tool, **Item I**.



7. Insert one side of the 150 x 150 PTZ Scissor Lift, **Item G** into the channel of the already installed 250mm PTZ lift extrusions with both end caps, **Item S**. Ensure the adjustment knob is facing the rear of the teleprompter as shown.



8. Attach the second 250mm PTZ lift extrusions with both end caps, **Item S** using the M6*40mm screws, **Item L** and M4 CRV hex tool, **Item I**.



9. Insert the 70/30 mirror glass, **Item T** with the two green dots facing the talent.
10. Secure the 70/30 mirror glass, **Item T** by installing the Glass support bar, **Item U** using the M6*14mm screws, **Item M** and M4 CRV hex tool, **Item I**.



11. Attach your PTZ camera to the 150 x 150 PTZ Scissor Lift, **Item G** with the 9mm long $\frac{1}{4}$ thumb screw with washers, **Item K**. The washer(s) can be removed as required.



12. Adjust the position of the 150 x 150 PTZ Scissor Lift, **Item G** as required.

Tip: Position the PTZ lens as close to the 70/30 mirror glass as possible to achieve the best range of pan.



13. Lock the position of the 150 x 150 PTZ Scissor Lift, **Item G** with the 16mm long screw, **Item N**.



14. Install the 15" LCD Control Unit, **Item A** by inserting the 9mm long $\frac{1}{4}$ thumb screw with red dot, **Item J** through the slot in the TP-900 metal base tray with tripod plate, **Item F**.



15. Install the Cloth Hood, **Item H**. The hood is secured to the inside of the TP-900 metal base tray with tripod plate, **Item F** and Glass support bar, **Item U** via integral magnets.

The rear of the hood can be expanded if the PTZ camera or cables protrude past the rear of the TP-900 frame.

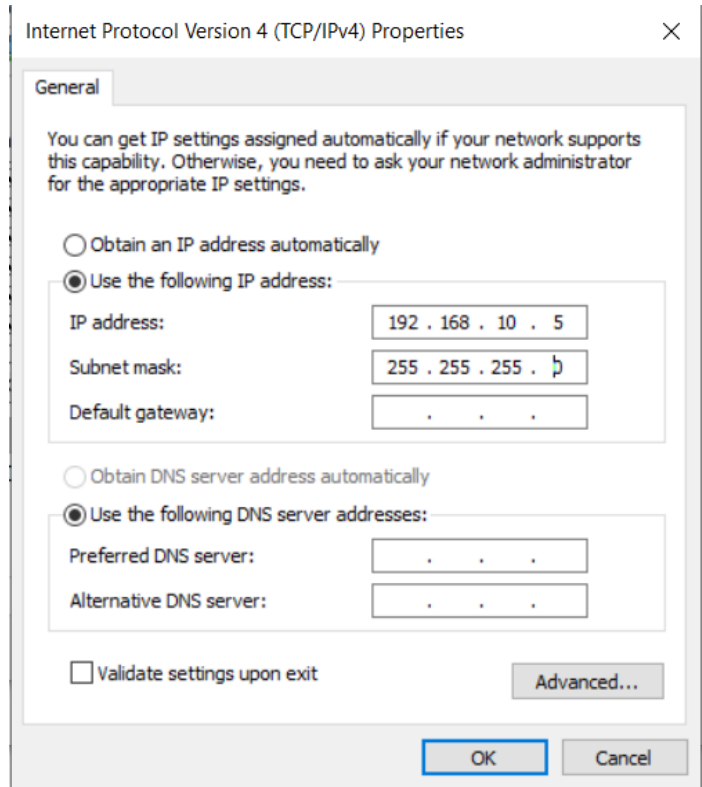
16. Turn on the 15" LCD control unit by connecting the mains power supply, **Item B**, the power cable can be routed through the hole in TP-900 metal base tray with tripod plate, **Item F**. The dvPrompter Plus software will automatically load, please see the [appropriate](#) section of this manual for detailed software usage instructions.
17. If required adjust the position of the 15" LCD control unit.
18. Adjust the camera exposure settings as necessary. See the [Camera Exposure](#) section of this manual.

Connect a PC/Laptop for Control and Monitoring over IP

The TP-900 has the Datavideo dvPrompter Plus app built in. The TP-900 can be monitored and controlled from any Ethernet connected device with a modern web browser.

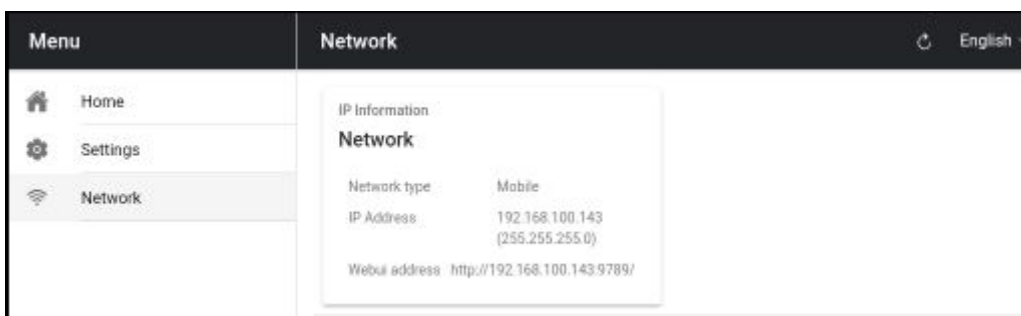
Direct Ethernet Connection

1. Connect an Ethernet cable between the TP-900 and your PC/Laptop
2. Power on the TP-900, the dvPrompter Plus app will open automatically
3. The TP-900 has the static IP address 192.168.10.10 by default, we must also set a static IP address on the PC/Laptop
4. Turn on the Windows computer and set it to static IP set up within the **Windows Network and Sharing Centre**. In our example the computer is given the following IP settings so that the computer matches the same IP range as the TP-900.
5. Open a web browser and navigate to <http://192.168.10.10:9789>, you will see the main control page.
6. Please see the [appropriate](#) section of this manual for software operation instructions



Connection via a Router / DHCP LAN

1. Connect the supplied USB mouse to the TP-900 and power it on
2. Once the TP-900 has booted, right click to close the dvPrompter Plus app
3. Navigate to Settings > More > Ethernet
4. Change the 'Ethernet IP mode' from static to DHCP
5. Connect the TP-900 to your existing LAN
6. Open the dvPrompter Plus app
7. Click the menu bar and then 'Network'
8. The network control URL will be shown as below

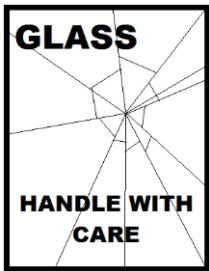


9. Please see the [appropriate](#) section of this manual for software operation instructions

Camera Exposure and the 70/30 Mirror Glass

After setting up the camera with the 70/30 glass in front of the lens adjust the camera set up and white balance. This is because the 70/30 Glass affects the camera exposure by approximately 1 stop almost like the effect of a neutral density filter. Consult your camera manual for further help and advice with its exposure and white balance settings.

Cleaning the 70/30 Glass



This product contains a sheet of 70/30 glass please handle it with care.

To avoid a risk of damage or injury please follow this instruction manual and use caution when transporting, un-packing, cleaning, assembling or dis-assembling this part of the product.

Datavideo recommend cleaning the glass regularly to remove dust and finger print marks. This will ensure the best image quality is recorded when the camera is looking through the glass.

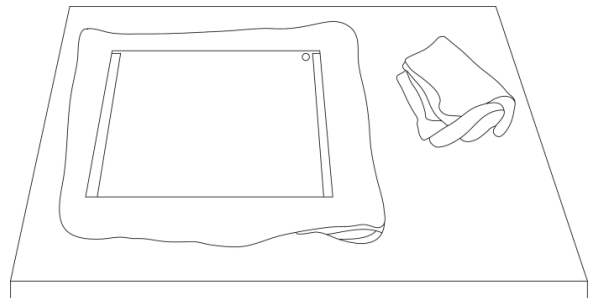
Never attempt to clean the glass whilst it is mounted in the prompter instead remove it carefully from the prompter, clean the glass and then re-install it into the prompter frame. Handle the glass carefully using the cloth covered edges of the glass at all times.

To retain the required qualities of the glass and to avoid scratching the glass during cleaning.

- **Never use** abrasive cloths, pads or abrasive based cleaning fluids on the glass.
- **Never use** cleaning fluids based on an acid or vinegar solution.

Place the glass on a soft, stable, dirt and lint free work surface such as a table with a clean cloth already laid out on it. Then use a second clean, lint free, soft cloth to clean the glass.

Do not apply cleaning fluids to the glass directly, instead apply or spray a small amount of the cleaning fluid onto the cloth. Proceed to clean the glass and work in a light circular motion with the cloth. Ensure all finger marks and streaks are gone before turning the glass over and repeating with the other side.



Optional Teleprompter Remote Controls

The TP-900 prompter can be controlled and monitored in real time over IP using a laptop or tablet.

Optionally you can use the Datavideo WR-500 handheld controller, the Datavideo FS-30 foot switch controller, generic 2.4 Ghz wireless presentation clickers or the Contour Shuttle Xpress.

Please see below for more details:

WR-500 Handheld Controller



Optionally you can purchase the WR-500 remote control for direct wired control. The **WR-500** remote control supports Bluetooth and Wired operation, only wired operation is supported by TP-900.

The WR-500 supports control of both scrolling text and slides.

When first removed from the retail package the WR-500 remote is already in **wired mode**. When a button is pressed a **RED LED** will flash.

In wired mode, the remote needs to be physically cabled to the TP-900. A four-pole jack to jack plug cable is provided with this remote.

One end of the cable fits into the 3.5mm input adapter (Item I, supplied with the TP-900). The other end plugs into the jack socket on the WR-500 remote.

NOTE: When using this remote in wired mode the **dvPrompter Plus** app should also be set to **Wired – WR-500** in the **Remote menu option**.

Control Buttons

Button	Whilst Scrolling Text	Whilst Paused	Slides
+	Speed up scroll	next break marker	Next slide
-	Slow down scroll	Previous break marker	Previous slide
⏸	Pause	Play	NA
⏪	Reduce font size	Load previous script in playlist	Load previous script in playlist
⏩	Increase font size	Load next script in playlist	Load next script in playlist

LED Indicators

RED LED	Wired Mode
GREEN LED	Bluetooth 4

Remote Accessories

Lanyard Necklace

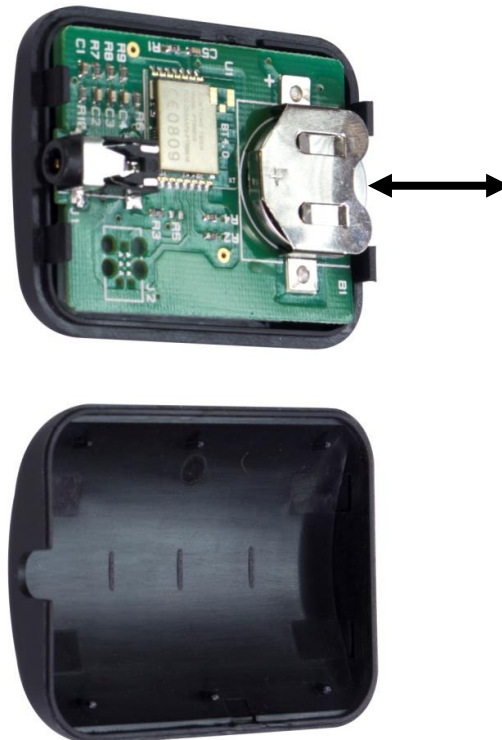


Plug the lanyard necklace into the jack plug socket.

CR2032 Battery

A **CR2032 button battery** is installed inside this remote. The original battery supplied (when new) is expected to last for 3 years under average / normal use.

If the remote is unreliable in Bluetooth mode, this can be an early sign the battery is low.



This button battery can be replaced by the user when it dies. **Please remove the back case cover carefully** to avoid user damage to the PCB or case. Then slide the old battery out.

Please ensure the new button battery is installed with the positive (+) side of the cell facing the (+) sign on the PCB battery slot.

FS-30 Foot Switch



Optionally you purchase the FS-30 foot switch control for direct wired control. The FS-30 foot switch connects via USB and offers three pedals with independent functions. The FS-30 uses non-contact photoelectric sensors for near silent operation.

The FS-30 supports control of both scrolling text and slides.

Control Buttons

The FS-30 will work all TP-900 teleprompters running dvPrompter Plus version 1581 or newer, please see the [appropriate](#) section of this manual for information on updating the dvPrompter Plus software.

Please connect the FS-30 to the **white USB** port on the teleprompters 15" LCD monitor, the FS-30 will work as soon as its connected, there is no need to set any control options within the dvPrompter Plus application.

The table below details the functions of each pedal.

Button	Whilst Scrolling Text	Whilst Paused	Slides
Left Pedal	Slow down scroll	Previous break marker	Previous slide
Right Pedal	Speed up scroll	Next break marker	Next slide
Middle Peal	Pause	Play	NA

Generic Presentation Clickers



Most generic presentation clickers with a USB receiver are supported by TP-900s running dvPrompter Plus version 1581 or newer, please see the [appropriate](#) section of this manual for information on updating the dvPrompter Plus software.

We have provided support for control of both scrolling text and slides.

*The above is an example of a 2.4 Ghz wireless presentation clicker with a USB receiver.

Control Buttons

Please connect the USB receiver to the **white USB** port on the teleprompters 15" LCD monitor, the presentation clicker will work as soon as its connected, there is no need to set any control options within the dvPrompter Plus application.

The table below details the functions the buttons commonly found on most presentation clickers.

Left <	Slow down scroll	Previous break marker	Previous slide
Right >	Speed up scroll	Next break marker	Next slide
Black Screen	Pause	Play	NA
Start	Pause	Play	NA

Please Note: Whilst we have made every effort to support most generic presentation clickers, we cannot guarantee compatibility provide support for third party controllers.

Contour Shuttle Xpress



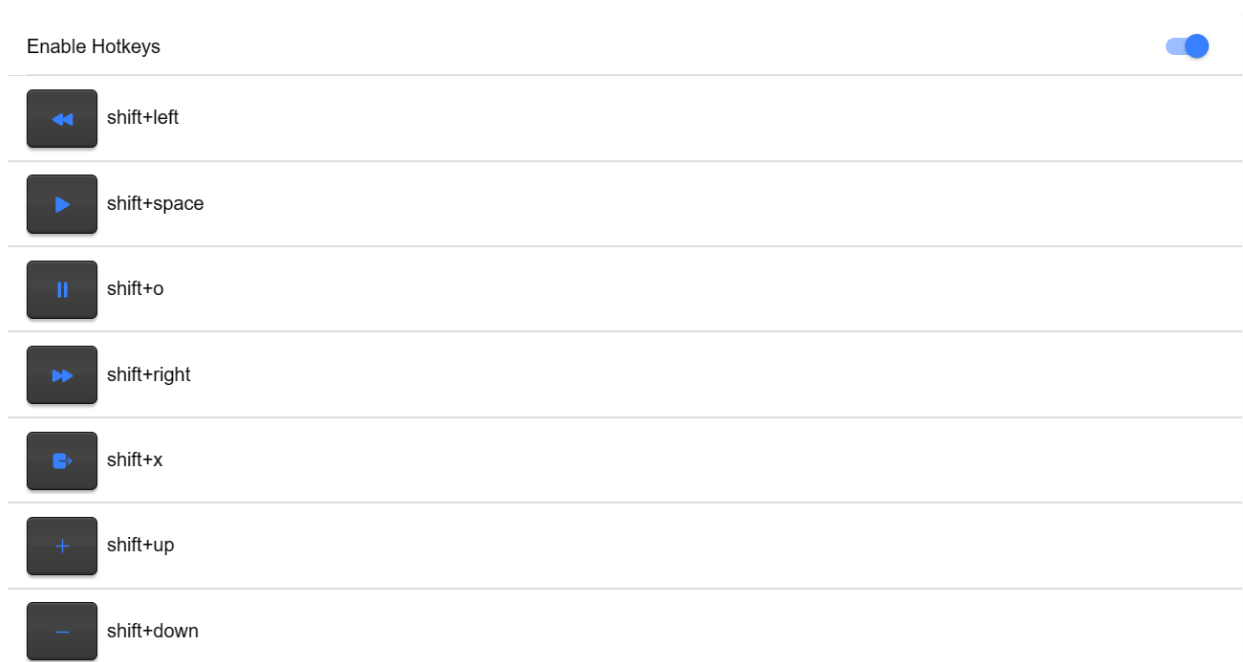
The Contour Shuttle Xpress is supported by TP-900s running dvPrompter Plus version 1726 or newer, please see the [appropriate](#) section of this manual for information on updating the dvPrompter Plus software.

We have provided support for control of both scrolling text and slides.

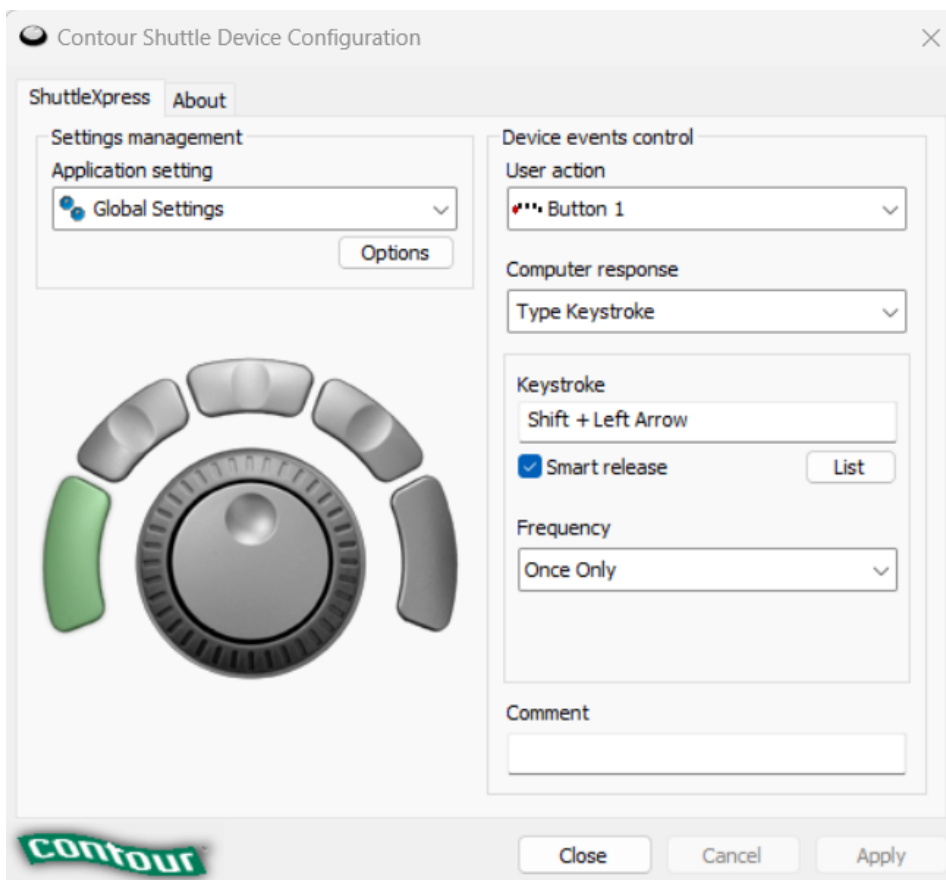
Setup

The Contour Shuttle Xpress should be connected to the operator's PC or Mac via USB, as long as the WebUI of the TP-900 is open on the operator's PC/Mac the Shuttle Xpress will have full control of the prompter over the local network.

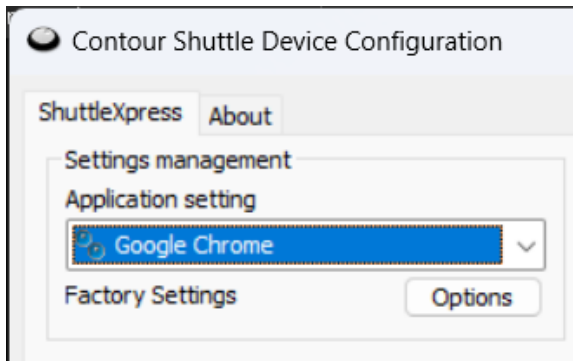
1. Open the WebUI of the TP-900, please see the [appropriate](#) section of this manual for more information on how to access the WebUI.
2. Click the 'Settings' menu and enable the 'Hotkeys' option. The hotkeys should be set as below by default.



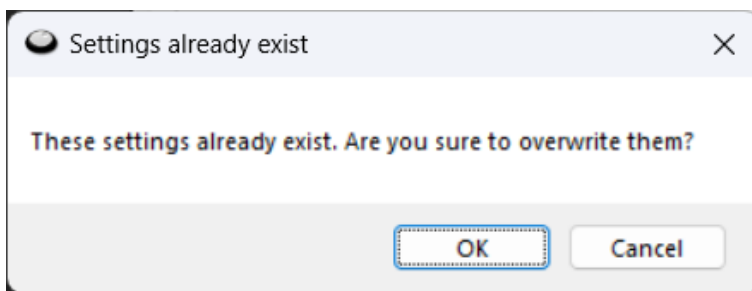
3. Download and install the Contour Shuttle Xpress software for your operating system <https://contour-design.co.uk/products/multimedia-controller-xpress#details>
4. Download the Contour Shuttle Xpress settings file for dvPrompter Plus <https://www.datavideo.com/global/file/download?id=4330>
5. Open the 'Contour Shuttle Configuration' application.



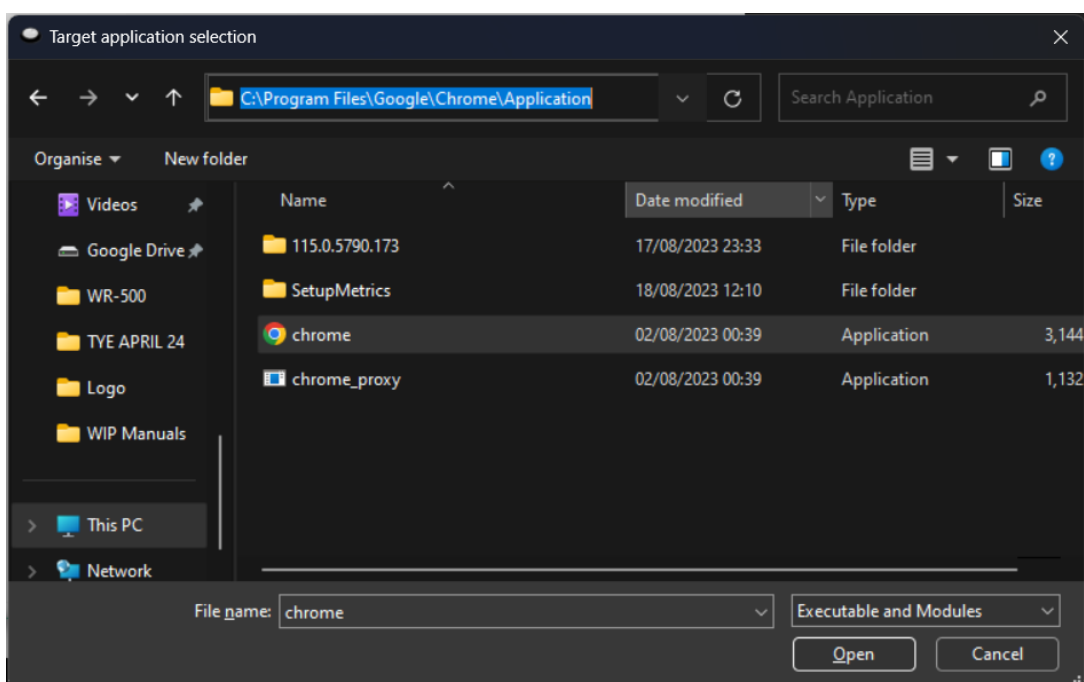
6. We need to clear existing settings on the web browser that you will be using. In the example below, we assume the **Google Chrome** browser will be used.
7. Select Google Chrome in the 'Application Setting' list as shown below.



8. Click the 'Options' button and then 'Remove settings', click 'Yes' when prompted.
9. Now click the 'Options' button and then 'Import Settings'
10. Select the Contour Shuttle Xpress settings file for dvPrompter Plus you previously downloaded and click 'Open'.
11. Click 'OK' again when prompted to overwrite the existing settings



12. You will then be prompted to select a target application. Here we need to find the Google Chrome application and on Windows it's usually located under C:\Program Files\Google\Chrome\Application as shown below.

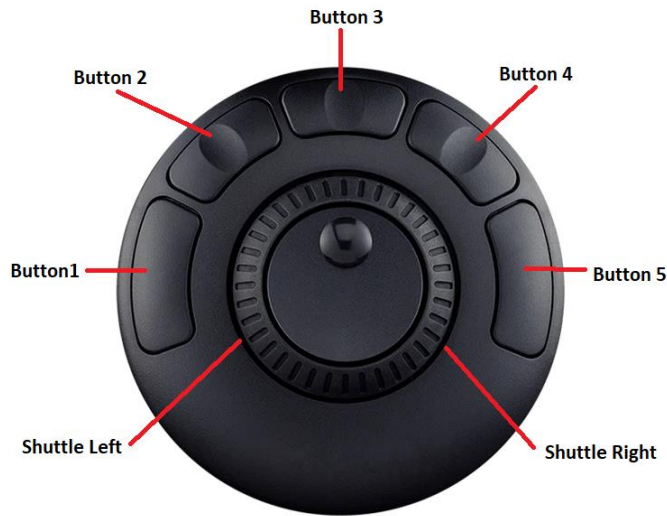


13. Click 'Open' then 'Apply'
14. Open the WebUI of the TP-900, the Shuttle Xpress will be operational as long as the WebUI is open.
15. To control how aggressively the jog wheel adjusts the scroll speed you can adjust the 'Speed Adjustment Steps' option under the 'Settings' menu.

Speed Adjustment Steps



Control Buttons



Button	Whilst Scrolling Text	Whilst Paused	Slides
Button 1	Reduce font size	Load previous item in playlist	Load previous item in playlist
Button 2	Slow down scroll	Previous break marker	Previous slide
Button 3	Pause	Play	NA
Button 4	Speed up scroll	Next break marker	Next slide
Button 5	Increase font size	Load next item in playlist	Load next item in playlist
Shuttle Left	Slow down scroll	NA	NA
Shuttle Right	Speed Up scroll	NA	NA

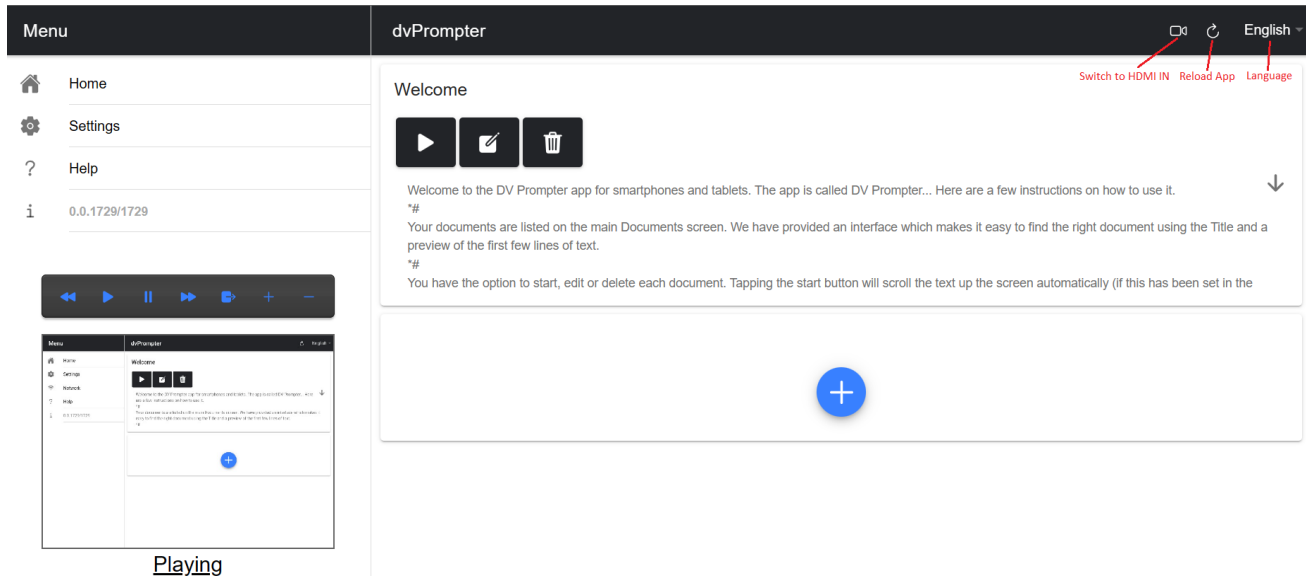
dvPrompter Plus App

The TP-900 includes a fully unlocked version of the prompter Plus application, the application can be remotely managed via its WebUI, please see the [appropriate](#) section of this manual for information on how to access the WebUI.

Documents Screen

When you first launch the WebUI, you will see the screen below.

The menu bar in the top left-hand corner provides access to the various settings menus.



Creating and Editing Text Scripts and Slides

Please see the [appropriate](#) section of this manual to understand how to access the app's remote control webui.

Text Scripts

To create a new script via the web interface simply tap the '+' button, enter a title and then enter the script body into the rich text editor. The script will be saved automatically when you close the rich text editor by tapping the 'X'.

To edit a script on the device simply tap the 'Edit' button, the script will be saved automatically when you close the rich text editor by tapping the 'X'.

Edit Content
✕

Add to Playlist Title: Welcome

B I U ↶ ↷ H₁ H₂ ☰ ☷ x₂ x² ≡ ≡ ↕ Normal Normal A AcademyEngage

Welcome to the DV Prompter app for smartphones and tablets. The app is called DV Prompter... Here are a few instructions on how to use it.

*#

Your documents are listed on the main Documents screen. We have provided an interface which makes it easy to find the right document using the Title and a preview of the first few lines of text.

*#

You have the option to start, edit or delete each document. Tapping the start button will scroll the text up the screen automatically (if this has been set in the settings) or the text will start on your command by tapping the screen and then tapping the mini play icon at the top of the screen. Tapping the screen while your document is running will display the mini control buttons at the top of the screen, here you will see buttons to start and stop the scrolling, increase and decrease the text size and return to the documents screen.

*#

Tapping the edit button will bring up a document control screen allowing you to edit the document. Press the appropriate button for the action you want to take. You can also edit the document over the WiFi network from any other device with a web browser, please see the user manual for more information.

*#

To add a new document, press on the + button at the bottom of the documents screen. Here you can name the document title and paste your new document from a previous copy function within your email or another text app on your device, directly into the Document text screen. Tap the blue cross in the top right-hand corner to save your new document and return to the main Documents screen. You can also create new documents over the WiFi network from any other device with a web browser, please see the user manual for more information.

Slides

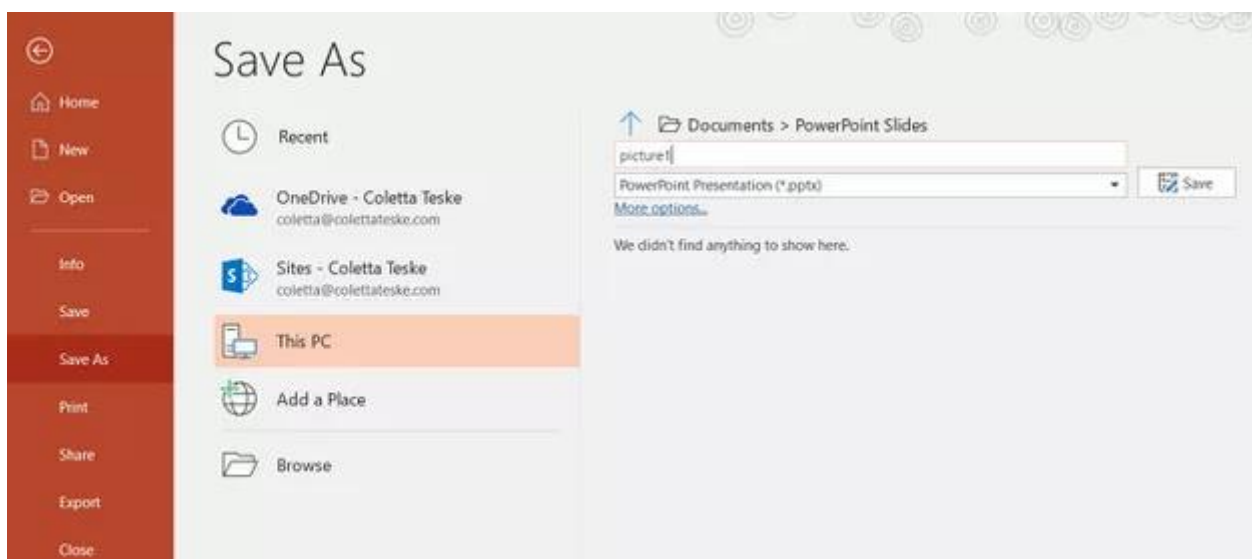
In addition to text-based scripts you can now import your Powerpoint or Keynote presentation slides via the web interface, slides can be controlled using the hardware WR-500 control or the web based remote control interface. dvPrompter Plus supports seamlessly switching between text-based scripts and slides, you can even add slides and text-based scripts to a playlist

dvPrompter Plus supports mirroring slides in real time so your content is the right way around even when viewed via the mirror glass.

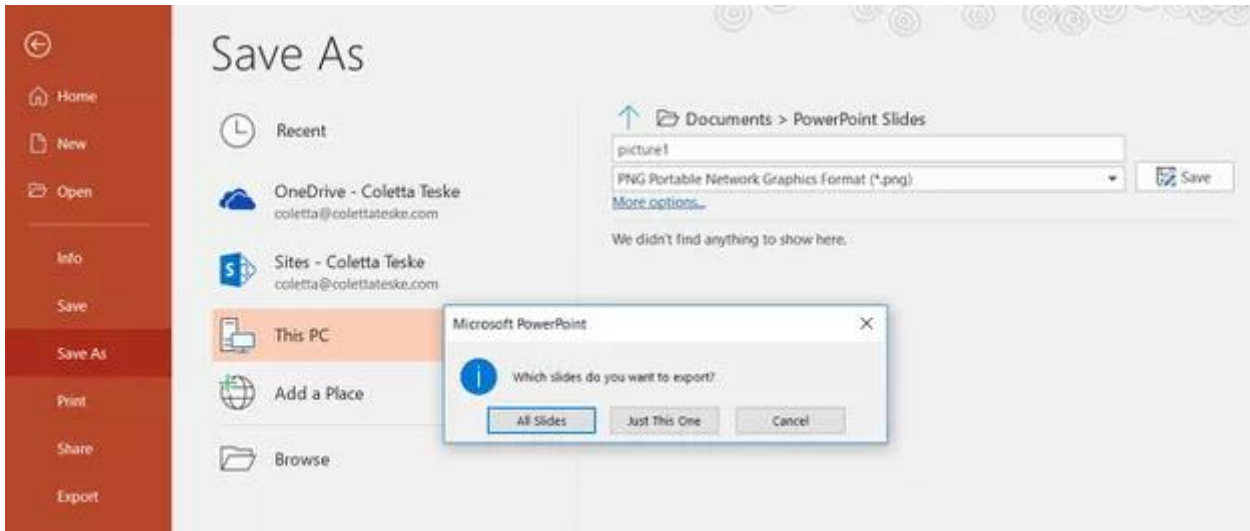
Please Note: Slide mode allows you to import slides as images, you must first export your slides as images from PowerPoint and Keynote

Exporting Slides from PowerPoint

1. Before you convert slides to images, save your PowerPoint presentation to the PPTX or PPT format so you don't lose your work.
2. Select the slide you want to save as an image. If you want to convert all the slides to images, select any slide.
3. Select 'File' > 'Save As'. In PowerPoint for Mac, select 'File' > 'Export.'
4. Choose the location where you want to save the file and enter a name for the image file.



5. Select the 'Save As' type down arrow to display a list of file formats. By default, PowerPoint Presentation (*.pptx) appears in the text box. On Mac, use the menu next to 'File Format'.
6. Select the image format you wish to save your presentation. Choose JPEG.
7. Select 'Save'. In PowerPoint for Mac, choose either 'Save Every Slide' or 'Save Current Slide Only', then select 'Export'.
8. Choose whether you want to export 'All Slides' or 'Just This One'.

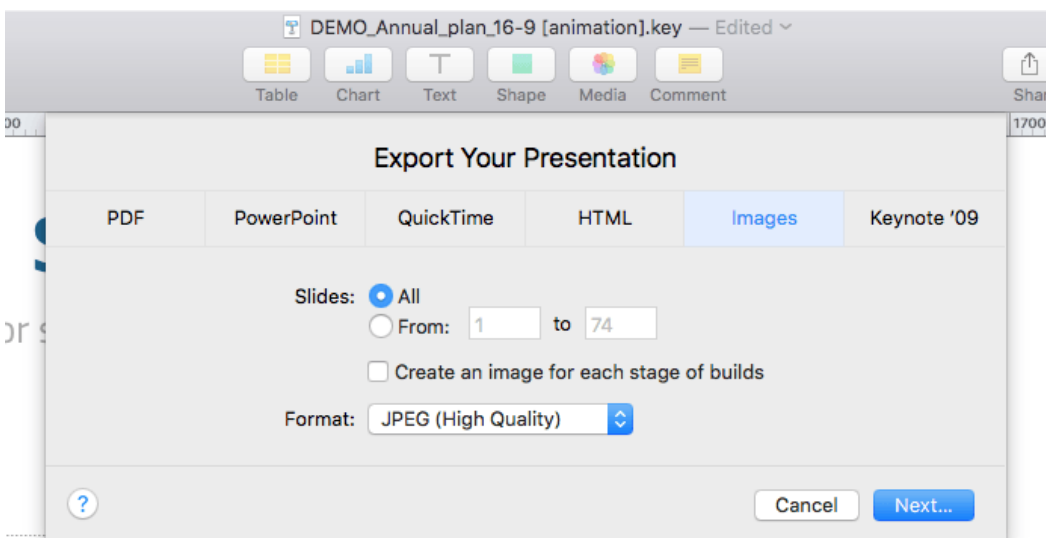


9. The slide is saved in the selected file format.

If you convert more than one PowerPoint slide to separate image files, a new folder is created in the destination folder. This new folder uses the same name as the presentation. If you haven't saved the PowerPoint file, your exported slide images are saved in a folder with a default name, for example Presentation1.

Exporting Slides from Keynote

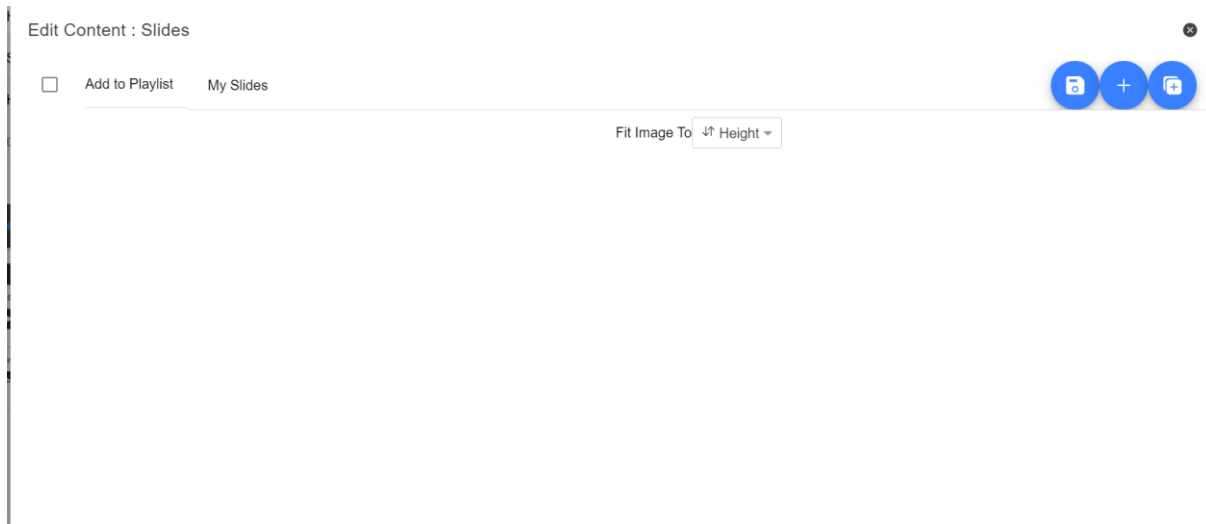
1. Before you convert slides to images, save your presentation so you don't lose your work.
2. In the top menu select 'File' > 'Export to' > 'Images'
3. Select the 'JPEG (High Quality)' format and specify the range of slides that you want to save as images. If you want to save all the slides, check the point 'ALL'.



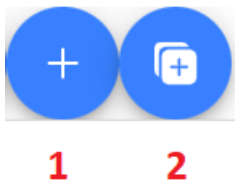
4. Click 'Next'
5. In the opened window select the folder where you want to save the images. Set the default name for the slide. During the export, KeyNote will automatically add the sequence number to this name.

Importing Slides

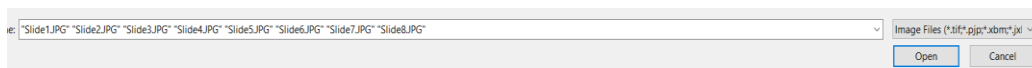
1. Tap or click the '+' button and select the 'Slides' option.
2. Enter a title, here I have used 'My Slides'



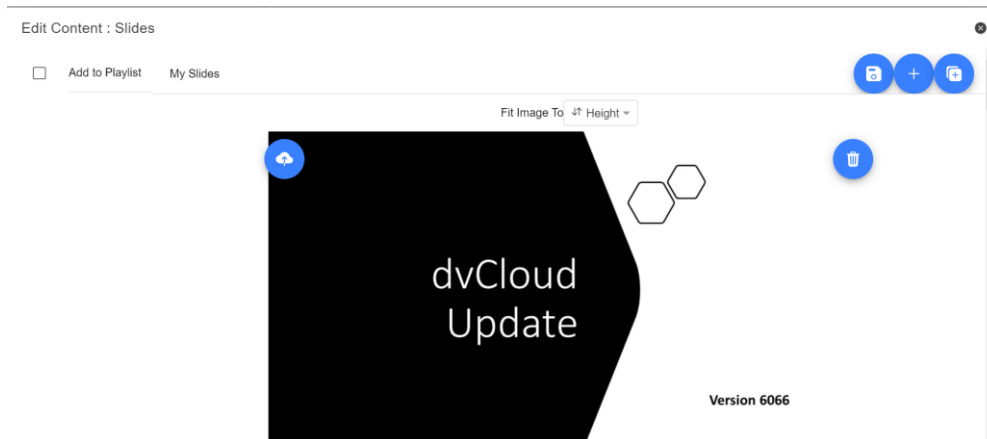
3. To import multiple slides, click button **2**. Button **1** can be used to add a single slide to an existing slide deck.



4. Select all the slides you want to import, CTRL + A can be used to select all.



5. Your slides will be imported in alphanumerical order, individual slides can be delete by clicking the blue trashcan icon next to each slide.



6. You can choose to fit the images to the 'Height' or 'Width' of your device, select the option that avoids stretching of the slides based on the aspect ratio of the slides and your devices screen.
7. The slides will be saved automatically when you close editor by tapping or clicking the 'X', you can also save changes using the blue save button on the top right corner of the editor.

To edit slides, simply tap or click the 'Edit' button, the slides will be saved automatically when you close the rich text editor by tapping or clicking the 'X'

Real Time Editing

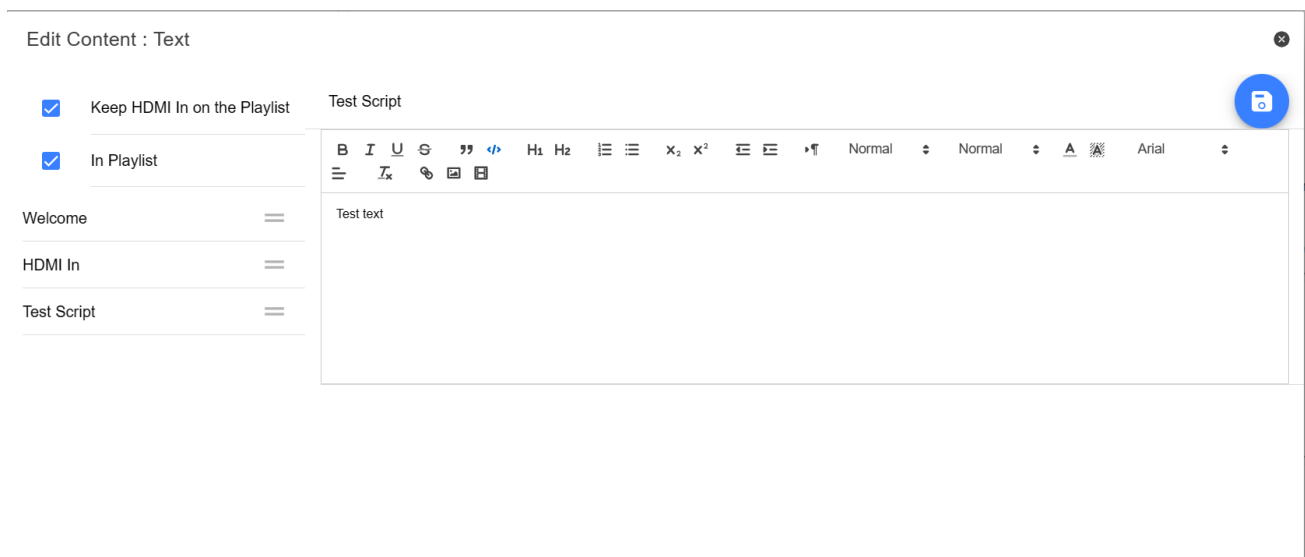
Real time editing allows you to modify a script that is currently on screen, simply modify the script via the web interface and watch it update in real time as soon as you save your changes.

Please Note: The scrolling text will pause momentarily while the changes are loaded.

Playlists

Adding a Script to the Playlist

Checking the 'In Playlist' option when creating or editing a script via the webui will allow the app to automatically load the next script in the list, it also allows you to quickly jump between scripts using the hardware remote control (see the control section of this guide for more information).

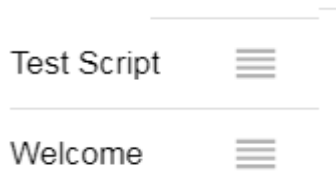


Adding HDMI IN to the Playlist

Checking the 'Keep HDMI IN on the playlist' option when creating or editing a script via the WebUI will allow you to use the HDMI input port as part of a playlist.

Changing the Playlist Order

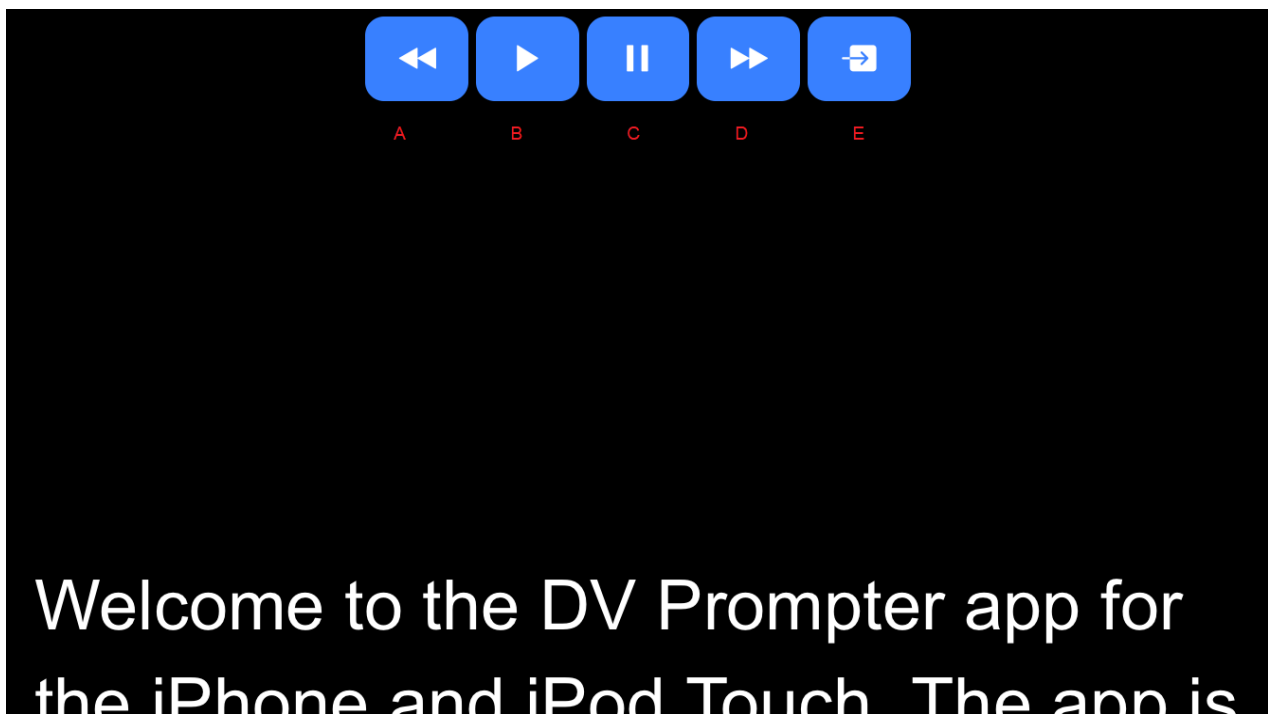
To change the running order of the playlist simply click the horizontal bars to the right of the script name and drag to the desired position.



Control

Via the Device (USB Mouse)

Clicking the screen when a script is loaded will display the menu bar shown below.



A: Decrease text size when scrolling / jumping to previous script in playlist when paused

B: Start / Pause scrolling

C: Start / Pause scrolling

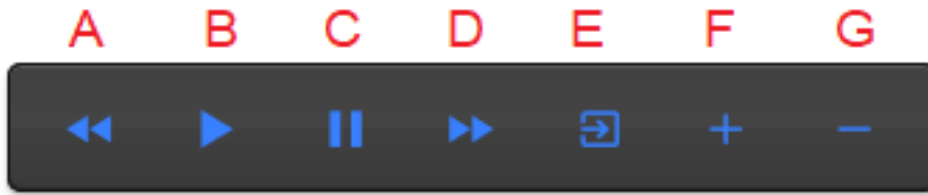
D: Increase text size when scrolling / jumping to next script in playlist when paused

E: Unload script and return to documents screen

Via the Web Interface

Please see the [appropriate](#) section of this manual to understand how to access the remote control webui of the app.

The network control interface is shown below.



A: Text Scripts: Decrease text size when scrolling / jumping to previous script in playlist when paused

B: Text Scripts: Start / Pause scrolling

C: Text Scripts: Start / Pause scrolling

D: Text Scripts: Increase text size when scrolling / jumping to next script in playlist when paused

E: Text Scripts: Unload script and return to documents screen

F: Text Scripts: Increase speed when scrolling / jumping to previous break marker when paused

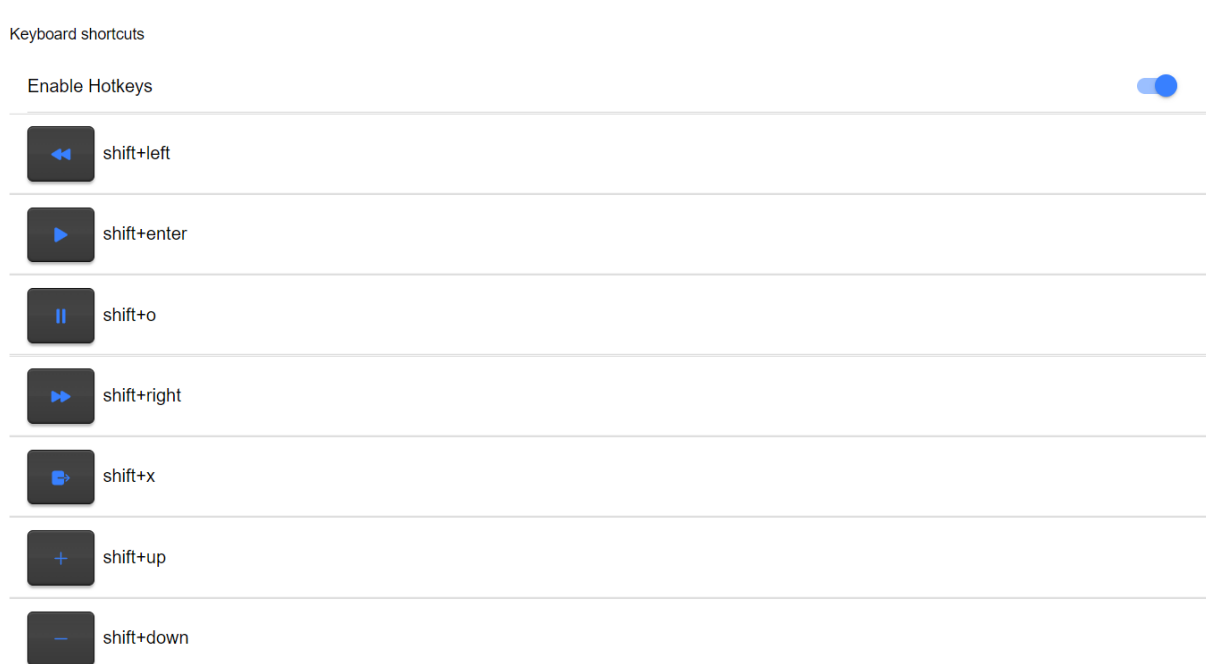
Slides: Next slide

G: Text Scripts: Decrease speed when scrolling / jumping to next break marker when paused

Slides: Previous Slide

Keyboard Shortcuts

Keyboard shortcuts can be assigned to any of the buttons (A to G) detailed above. To enable and assign keyboard shortcuts first enable the 'Enable Hotkeys' option from the 'Settings' menu on the web interface, the default shortcuts are shown below.



To change a shortcut simply left click the button you want to assign with the mouse and then press the key combination you want to assign.

Please Note: Take care not to assign key combinations that are assigned to system functions or that will be used when editing.

Using Optional Hardware Remote Controls

Please see the [Optional Teleprompter Remote Controls](#) section of this manual for more information.

Menu Bar

Clicking the menu bar (found in the top left-hand corner of the documents screen) will display the menu shown below, you will see five options:

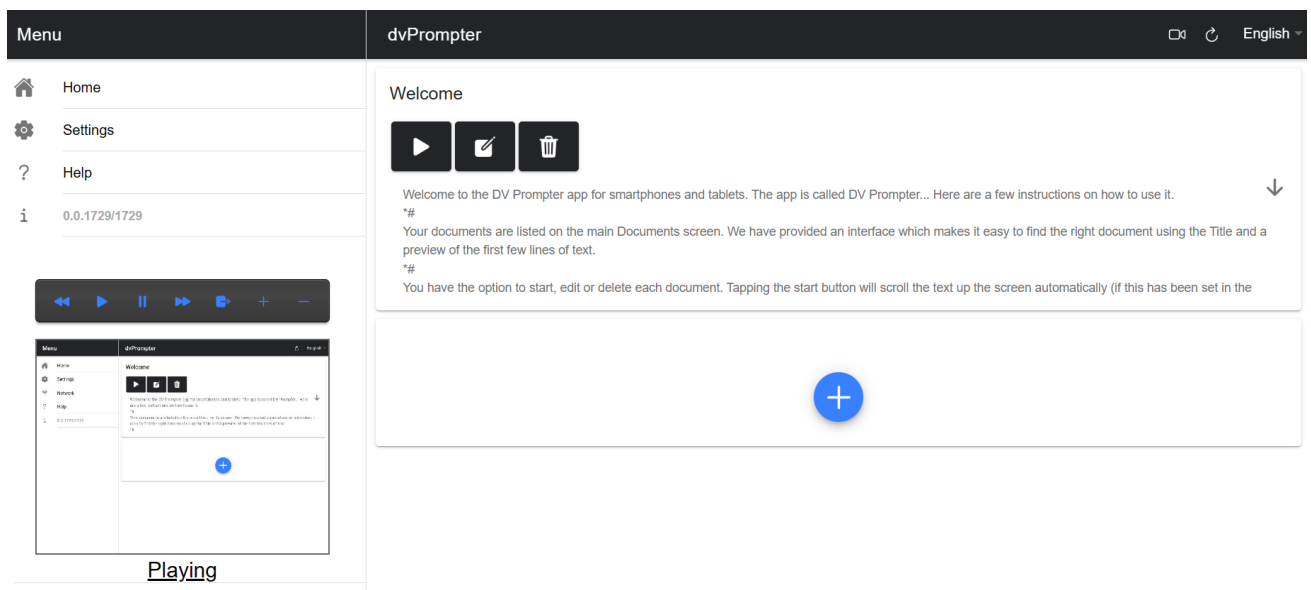
Home – Return to the documents screen

Settings – Display all app settings

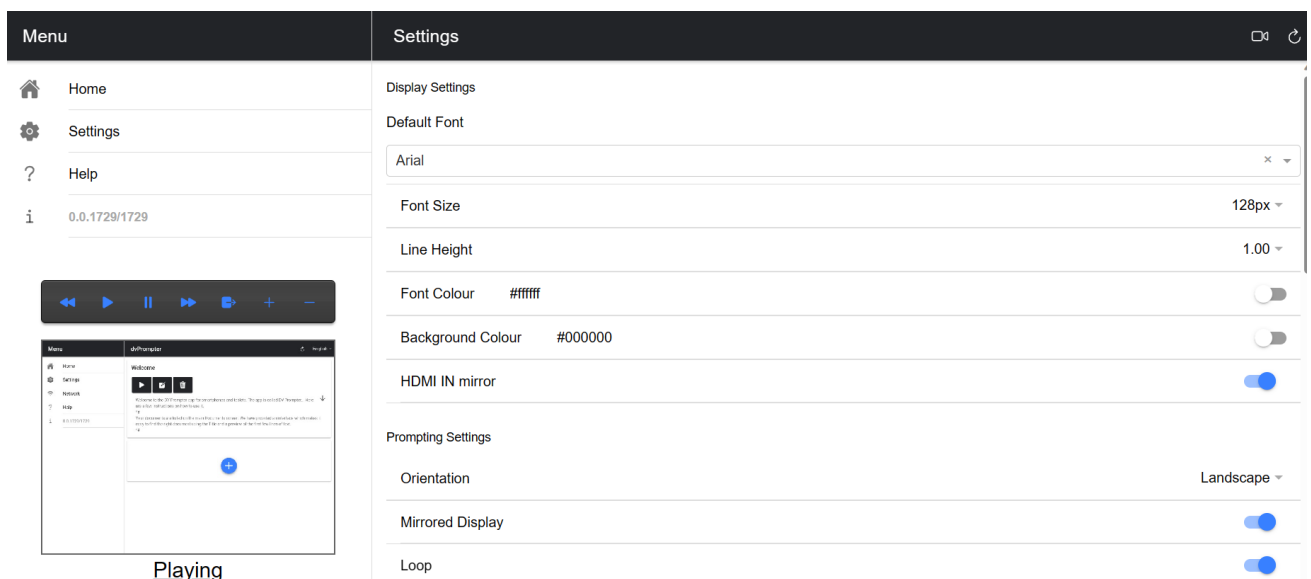
Network – Display the address required to access the app from any device with a web browser over the local Ethernet network

Help – Links directly to the dvPrompter Plus QSG

i – Displays the dvPrompter Plus app version



Settings



Slave Mode: When enabled the device will act as a slave screen to another dvPrompter app, please see the [appropriate](#) section of this manual for more information.

Default font: Select the default font used by the editor (this can be overridden on a per script basis using the editor).

Font Size: Sets the default font size, this will apply to all text that does not have a font size set within the editor.

Line Height: Sets the spacing between lines when scrolling, values below 1 may result in text overlapping.

Font colour: Sets the default font colour (this can be overridden on a per script basis using the editor).

Background colour: Sets the background colour.

HDMI IN mirror (TP-700/800/900 Only): Enable/disable hardware mirroring on the HDMI IN port.

Orientation: Select if your device will be 'Landscape' or 'Portrait'.

Mirrored Display: Set to 'Off' if reading the text directly from the device, set to 'On' if reading the text via a mirror.

Loop: Set to 'On' to continually loop the script when finished (only valid when playlists are not in use).

Scrolling speed: Set the speed the text will start to scroll at, this can be adjusted via the hardware or network remote control.

Speed Adjustment Steps: Control how many steps the speed will be increased/decreased with every button press.

Cue marker: Optionally select a cue marker to define the line of text the talent should read.

Cue Background: Set the cue marker background colour (only valid when using plain or combined cue markers).

External Display: When disabled any second display connected via HDMI or wireless will mirror the main display, when enabled text will only scroll on the second display, the main display can be used to create and edit scripts as well as control the text.

Border: Used to add a border around the scrolling text, this is useful if the text is too close to the edge of your monitor and/or beam-splitter glass.

Timer: Display a timer showing the time the text has been scrolling on screen, the timer will reset when a new script is loaded and pause when the script is paused.

Auto start: When set to 'On' the script will start scrolling automatically, when set to 'Off' the script must be started using the on-screen menu, hardware or network remote control.

Open HDMI on boot (TP-700/800/900 Only): Automatically switch to HDMI input 10 seconds after the app loads.

Start delay: Optionally set a delay (in seconds) between the start command being issued and text starting to scroll (works with manual start and auto start).

Screenshot Enabled: Enables or disables the screenshots used for remote monitoring via the web interface.

Screenshot Delay (ms): The time in milliseconds a screenshot is taken and sent to the network web interface for remote monitoring, a lower value will result in less delay but higher CPU and network usage.

Break marker: You can also set up text characters like *# that indicate a break in the scrolled text called break markers. These markers can then be used to quickly jump forward or backward between points in the text, when using the hardware or network remote control, should the running order of the production change.

Remote control: The optional Datavideo WR-500 controller can be used to control the script, please select either Bluetooth or wired mode.

Webui Access: All optional features are already unlocked on the TP-900.

Enable Hotkeys: Allows you to assign keyboard shortcuts to the control buttons. This option can only be configured via the web interface.

Synchronizing Multiple Devices

Via HDMI

The TP-900 features HDMI input and output ports, multiple TP-900 units can be connected in a daisy chain by connecting the HDMI output of one TP-900 to the HDMI input of another. The HDMI **output** port is located next to the Ethernet port.

Please see the [appropriate](#) section of this manual for more information on using the HDMI input port.

Please Note: The scrolling refresh rate will be reduced when driving external displays via HDMI, you may notice a slight jitter when scrolling at higher speeds.

Via Ethernet

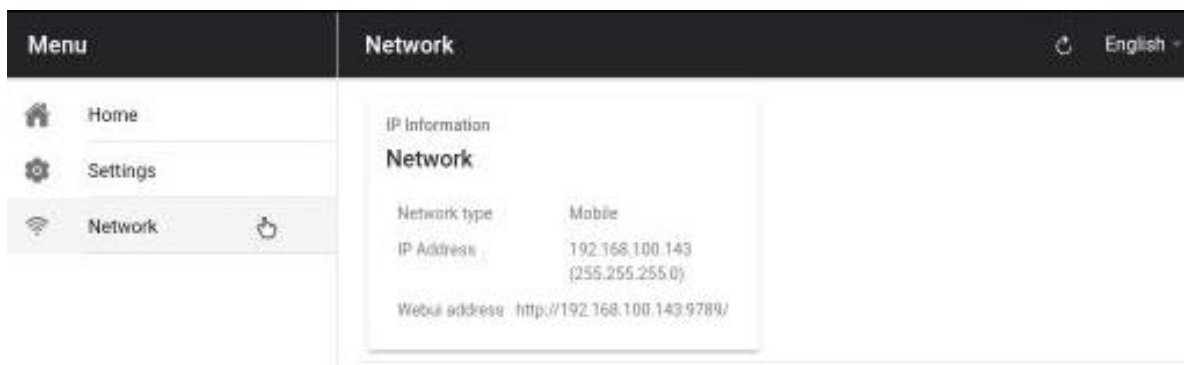
The feature allows you to synchronize the scrolling text on two or more TP-900s via an Ethernet network.

Requirements

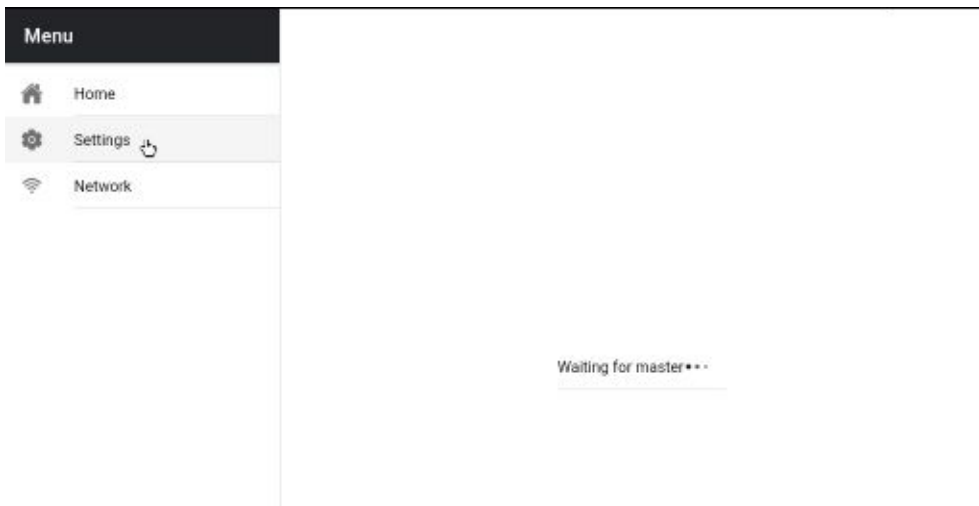
- All devices must be identical for synchronization to work (devices with identical screen heights may work but this cannot be guaranteed).
- Slave devices will place additional load on the master device, the number of slave devices that can be connected is dependent on the performance of the master device.
- All slave devices must be connected to the same local network as the master device.

Setup Instructions

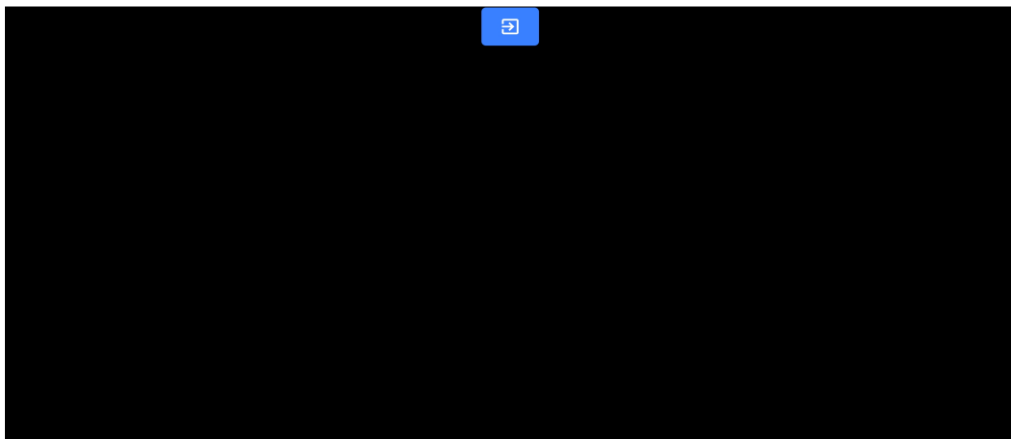
1. The master and slave devices must all have unique IP addresses on the same network. We would recommend connecting all TP-900s to a DHCP network/router so that all devices are assigned a unique IP address automatically. Please see the [appropriate](#) section of this manual for instructions on switching the TP-900 into DHCP mode.
2. Connect the supplied USB mouse
3. Obtain the IP address of the master device by navigating to the network menu.
4. Open the settings menu on the slave device, enable slave mode and enter the IP address of the master.



5. Tap home on the menu bar, you will see the screen below while the slave establishes a connection to the master.



6. Once connected the screen will turn white then black, the slave will now mirror the master.
7. To exit slave mode tap the screen then press the blue exit button, the app will close.



Using the HDMI Input

The HDMI input port can be used to connect third party teleprompter software, cameras and video conferencing software.

Please Note: HDMI input is only available with firmware 140001 or above, please consult the [appropriate](#) section of this manual to check your firmware revision and update if needed.

To manually switch to the HDMI input simply click the  button in the top right corner of the WebUI.

To permanently enable the HDMI input, enable the 'Open HDMI IN on boot' option under the 'Settings' menu, this can be done via the WebUI or directly on the device by connecting the supplied USB mouse.

The HDMI input can also be used as part of a playlist, please see the [appropriate](#) section of this manual for more information.

Hardware Mirroring

The HDMI input port features mirroring in hardware, this allows you to use any HDMI source and ensure the image is correctly oriented on the glass. Mirroring is disabled by default, to enable mirroring simply enable the 'HDMI IN mirror' option under the 'Settings' menu.

Please Note: Hardware mirroring is only available with firmware 140001 or above, please consult the [appropriate](#) section of this manual to check your firmware revision and update if needed.

Connecting an External Display

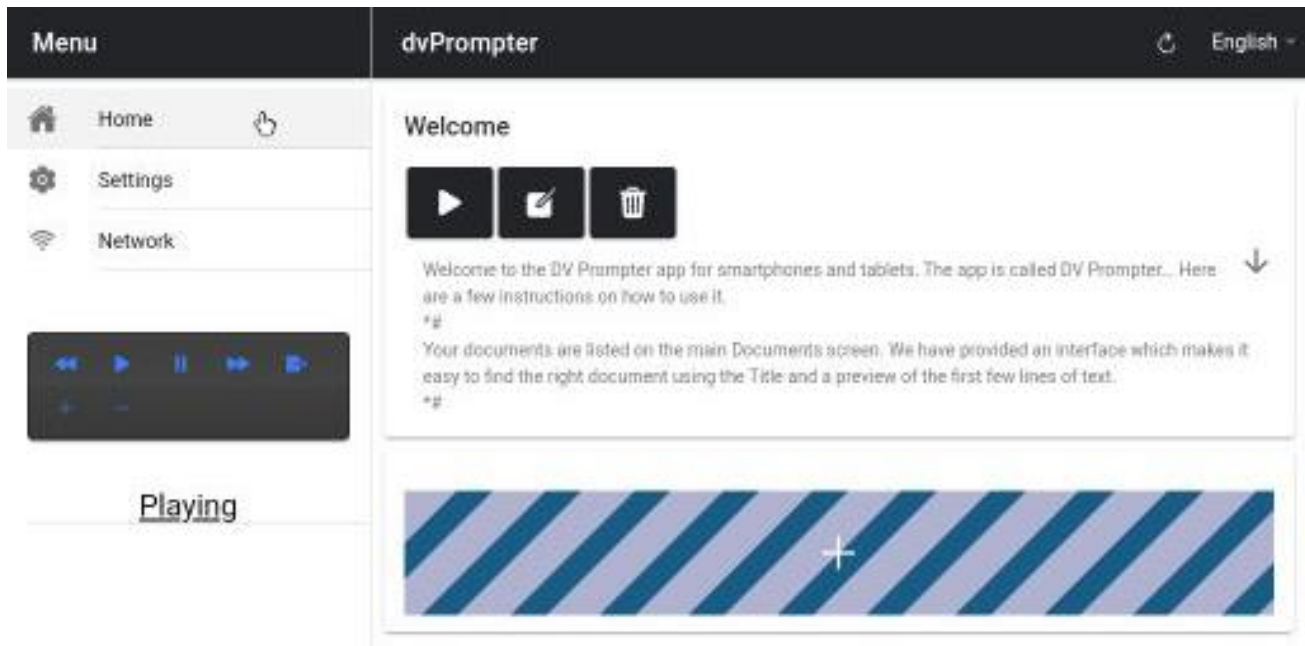
You can connect an external display using the HDMI output on the TP-900. The HDMI **output** port is located next to the Ethernet port.

External Display Setting Disabled (Recommended if using webUI control)

In this mode the external display will mirror the devices screen.

External Display Setting Enabled (Recommended if using USB keyboard and mouse)

In this mode the text will only scroll on the external display leaving the device screen free for script control and editing. The script control options can be access via the menu bar as seen below.

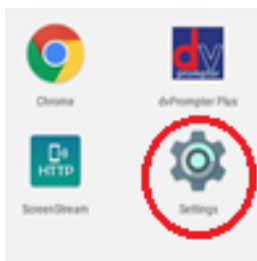


External Display Rotation

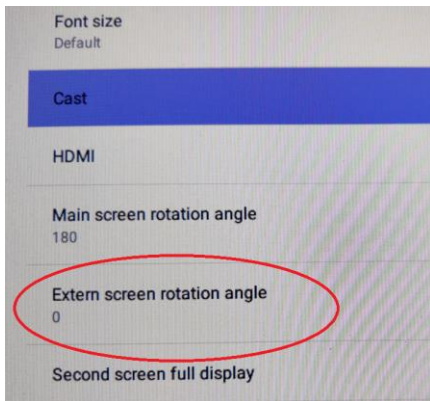
By default, the internal LCD screen is rotation angle is set to 180 degrees and the external HDMI output is set to 0 degrees. This is the correct configuration for connecting multiple TP-900 units via HDM, however if using the HDMI output to connect to an external display you should set the external rotation angle to 180 degrees also.

To change this setting:

1. Connect the supplied USB mouse and right click to close the dvPrompter Plus app
2. Click the 'Settings' app by clicking it once



- Click 'Display' and change the setting shown below.



Updating the App & Firmware

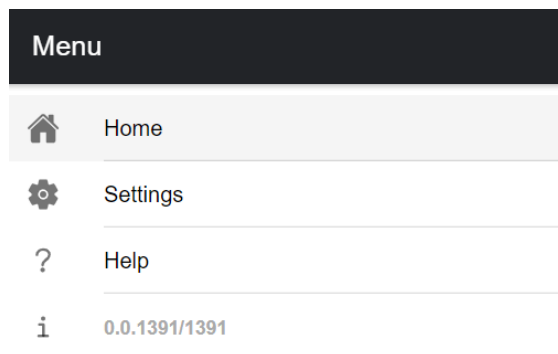
Please check the monitor's firmware is up to date and then check the app version.

Updating the Monitor Firmware

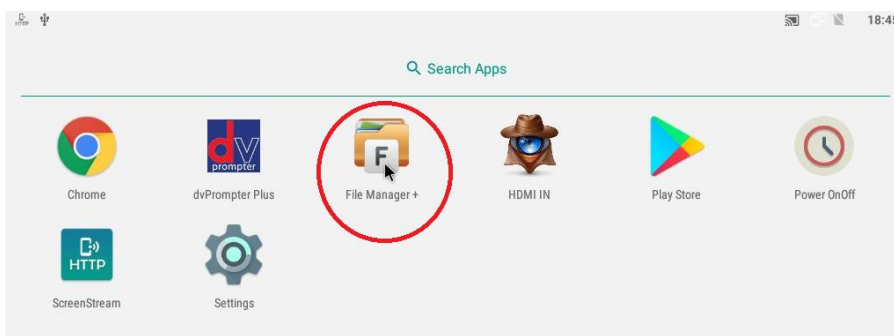
Please see the 'Firmware' under 'Downloads' here <https://www.datavideo.com/global/product/TP-900> for detailed instructions on updating the monitors firmware.

Updating the App

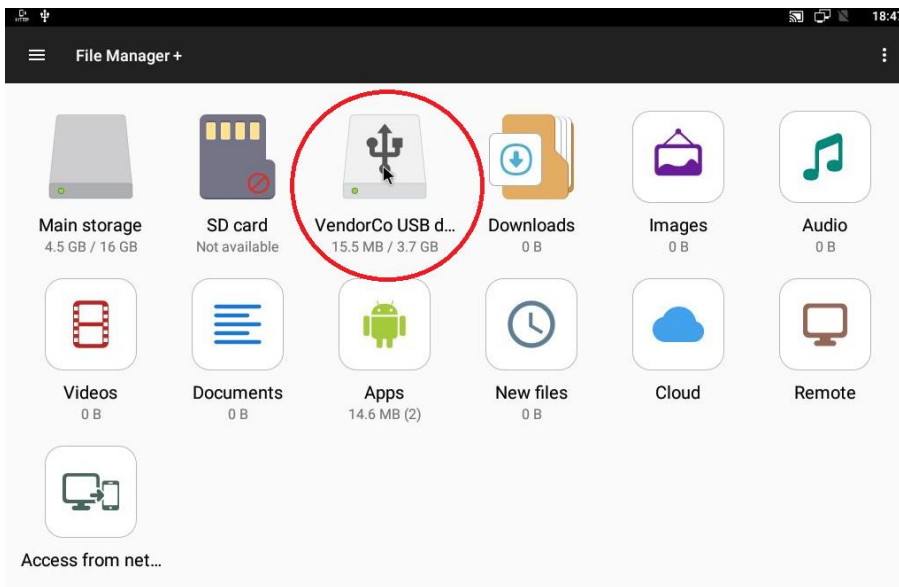
You can download the latest App (if available) from www.datavideo.com/product/TP-900. The current App version is shown at the bottom of the menu.



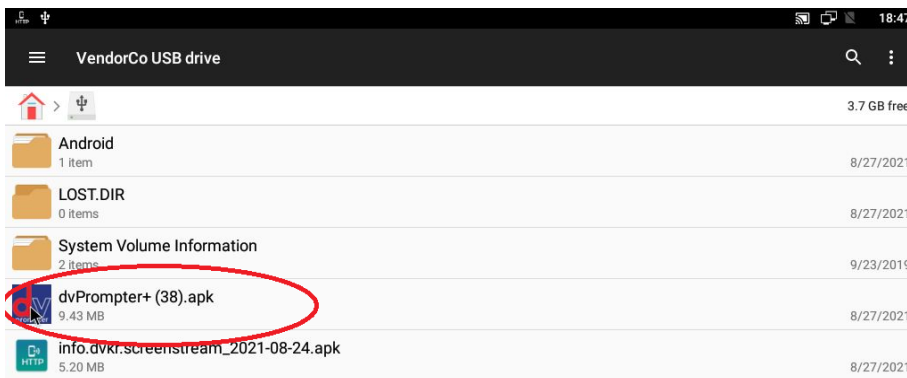
- Download the latest App from www.datavideo.com/product/TP-900
- Copy the downloaded .apk file to the root directory of a USB flash drive
- Connect the USB flash drive containing the file to one of the TP-900s USB ports
- Connect the supplied USB mouse to the other USB port
- Open the 'File Manager +' App by clicking it once



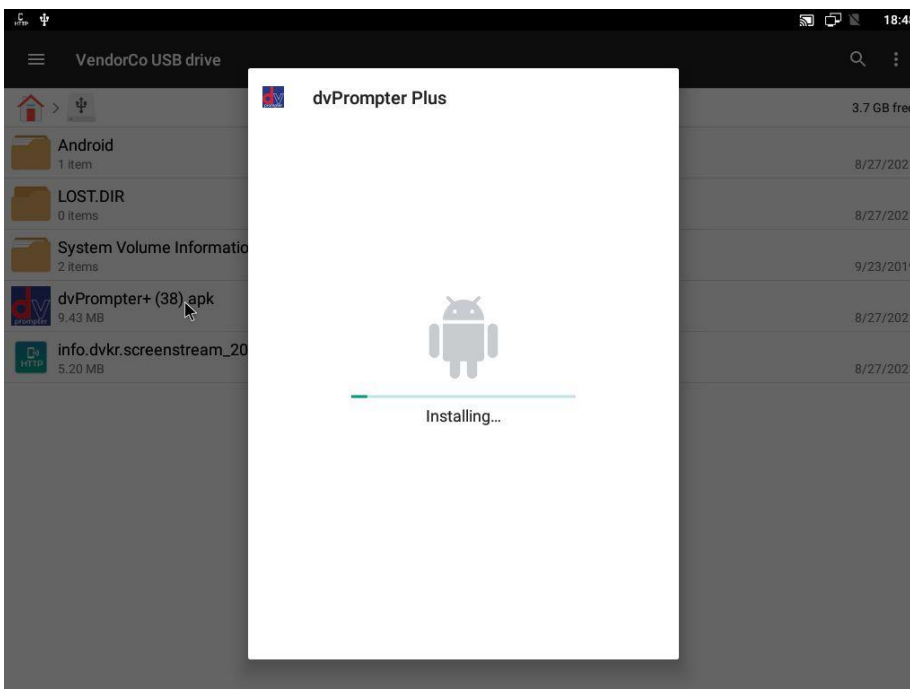
6. Open the USB flash drive by clicking it once



7. Double click the dvPrompter Plus .apk file you downloaded earlier



8. The update will install, the dvprompter App will automatically open when complete



Specifications

Device Used	15" monitor with integrated dvPrompter Plus Software	
Multi-language Support	English Dutch Spanish Portuguese Russian	
Prompter Size (Max)	Width	535
	Height	590
	Depth	350
LCD Native Resolution	1024 x 768	
LCD Brightness	350 NIT	
Remote Control	Monitoring and control via LAN Optional WR-500 wired hardware remote	
Weight	Net Weight	10.3KG
	Gross Weight	13.3KG
Operating Temperature	0 – 40°C	
Gift box size	610x510x2650 mm	
Power	12V 2A DC (Mains adapter supplied)	

Service & Support

It is our goal to make owning and using Datavideo products a satisfying experience. Our support staff is available to assist you to set up and operate your system. Contact your local office for specific support requests. Plus, please visit www.datavideo.com to access our FAQ section.

Please visit our website for latest manual update.

www.datavideo.com/product/TP-900

datavideo
www.datavideo.com



@DatavideoUSA @DatavideoIndia2016
@DatavideoEMEA @Datavideojapan
@DatavideoTaiwan @DatavideoLatam
@DatavideoAsia @DatavideoBrasil



@Datavideo
@Datavideo_EMEA
@Datavideo_Taiwan



@DatavideoUSA
@DVTWDVCN



@DatavideoUSA
@DatavideoEurope

All the trademarks are the properties of their respective owners.
Datavideo Technologies Co., Ltd. All rights reserved 2020

Aug-15-2023
G082060918E4